

09

SHELVING SYSTEMS

SHELVING SYSTEM SUPER, SHELVING SYSTEM SUPER SEAL [177](#)
SUPER NN, SUPER SEAL, SUPER STAINLESS STEEL [178-179](#)
SHELF CARTS, WIRE UTILITY CARTS [180](#)
PATIENT ITEM CARTS [181](#)
ITEM CARTS, GARMENT RACKS [182](#)
ACCESSORIES FOR SUPER SHELVING SYSTEM [183-185](#)
SHELVING SYSTEM CLASSIC [186-187](#)

SHELVING SYSTEM SUPER



+ Split sleeve connection

- Proven shelving system with split sleeve connection
- Height of shelves can be adjusted in steps of 25 mm
- Quick and easy assembly without tools
- Load rating
 - max. 150 kg for shelves from 610 to 1219 mm
 - max. 100 kg for shelves from 1372 to 1829 mm
- Racks available in various widths, depths and heights
- Wide range of accessories available

// AVAILABLE MATERIALS AND QUALITIES

- + Steel, nickel and chrome-plated **SUPER NN**
- + Stainless steel **SUPER stainless steel wire shelves** and **SUPER stainless steel solid shelves**

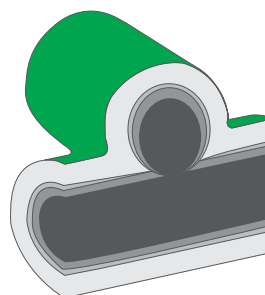


„Simple, flexible and resilient!
Optimal use of storage space!“

SHELVING SYSTEM SUPER SEAL



- Corrosion-resistant surface – suitable for cold storage
- Surface with antibacterial agent
- Proven shelving system with split sleeve connection
- Height of shelves can be adjusted in steps of 25 mm
- Quick and easy assembly without tools
- Load rating
 - max. 150 kg for shelves from 610 to 1219 mm
 - max. 100 kg for shelves from 1372 to 1829 mm
- Racks available in various widths, depths and heights
- Wide range of accessories available
- Dual corrosion protection: zinc-chromated surface with durable, temperature-resistant epoxy coating



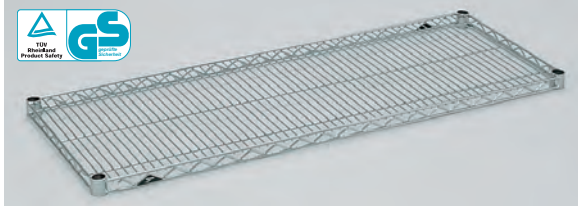
- Steel
- Nickel
- Chrome
- Epoxy Coating

// INFORMATION

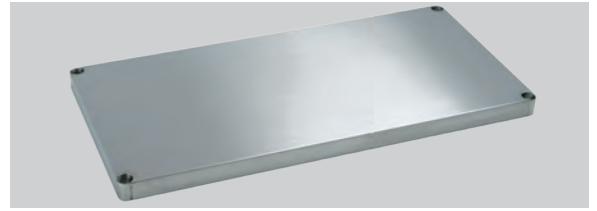
With integrated antibacterial agent.



SUPER SHELVES – POSTS



Wire shelf



Solid stainless steel shelf

DEPTH mm	WIDTH mm	ORDER CODE SUPER NN WIRE SHELVES	ORDER CODE SUPER SEAL WIRE SHELVES	ORDER CODE SUPER STAINLESS STEEL WIRE SHELVES	ORDER CODE SUPER STAINLESS STEEL SOLID SHELVES
356	610	NN 3561	1424 NK3	E 3561 NS	GEH 3561
	762	NN 3576	1430 NK3	E 3576 NS	GEH 3576
	914	NN 3591	1436 NK3	E 3591 NS	GEH 3591
	1067	NN 3510	1442 NK3	E 3510 NS	GEH 3510
	1219	NN 3512	1448 NK3	E 3512 NS	GEH 3512
	1524	NN 3515	1460 NK3	E 3515 NS	GEH 3515
	1829	NN 3518	1472 NK3	E 3518 NS	GEH 3518
457	610	NN 4561	1824 NK3	E 4561 NS	GEH 4561
	762	NN 4576	1830 NK3	E 4576 NS	GEH 4576
	914	NN 4591	1836 NK3	E 4591 NS	GEH 4591
	1067	NN 4510	1842 NK3	E 4510 NS	GEH 4510
	1219	NN 4512	1848 NK3	E 4512 NS	GEH 4512
	1372	NN 4513	1854 NK3	E 4513 NS	GEH 4513
	1524	NN 4515	1860 NK3	E 4515 NS	GEH 4515
1829	NN 4518	1872 NK3	E 4518 NS	GEH 4518	
533	610	NN 5361	2124 NK3	E 5361 NS	GEH 5361
	762	NN 5376	2130 NK3	E 5376 NS	GEH 5376
	914	NN 5391	2136 NK3	E 5391 NS	GEH 5391
	1067	NN 5310	2142 NK3	E 5310 NS	GEH 5310
	1219	NN 5312	2148 NK3	E 5312 NS	GEH 5312
	1372		2154 NK3	E 5313 NS	GEH 5313
	1524	NN 5315	2160 NK3	E 5315 NS	GEH 5315
1829	NN 5318	2172 NK3	E 5318 NS	GEH 5318	
610	610	NN 6161	2424 NK3	E 6161 NS	GEH 6161
	762	NN 6176	2430 NK3	E 6176 NS	GEH 6176
	914	NN 6191	2436 NK3	E 6191 NS	GEH 6191
	1067	NN 6110	2442 NK3	E 6110 NS	GEH 6110
	1219	NN 6112	2448 NK3	E 6112 NS	GEH 6112
	1372	NN 6113	2454 NK3	E 6113 NS	GEH 6113
	1524	NN 6115	2460 NK3	E 6115 NS	GEH 6115
1829	NN 6118	2472 NK3	E 6118 NS	GEH 6118	
762	914		3036 NK3	E 7691 NS	GEH 7691
	1219		3048 NK3	E 7612 NS	GEH 7612
	1524		3060 NK3	E 7615 NS	GEH 7615
	1829		3072 NK3	E 7618 NS	GEH 7618
914	914		3636 NK3	E 9191 NS	GEH 9191
	1219		3648 NK3		GEH 9112
	1524		3660 NK3	E 9115 NS	GEH 9115
	1829		3672 NK3		GEH 9118

LENGTH mm	ORDER CODE SUPER NN POSTS	ORDER CODE SUPER SEAL POSTS	ORDER CODE SUPER NN STAINLESS STEEL POSTS
370	NN F	13PK3	
875	NN G	33PK3	
1385	NN A	54PK3	EANN
1590	NN B	63PK3	EBNN
1895	NN C	74PK3	ECNN
2200	NN D	86PK3	EDNN
2450		96PK3	



Post

OPTIMIZATION LIST FOR STORAGE RACKS

Using the column „Shelf length“, determines the required length of the shelf. The corresponding cell contains additional information on the number of basic and add-on units, shelf length and the respective order reference for the possible version.

SHELF LENGTH mm	SHELF DEPTH mm	STARTER UNIT mm	ADD-ON UNIT 1 mm	ADD-ON UNIT 2 mm	ADD-ON UNIT 3 mm	SYSTEM SUPER NN	SYSTEM SUPER SEAL	SYSTEM SUPER NN STAINLESS STEEL	SYSTEM SUPER STAINLESS STEEL SOLID
610	457	610				NN 610/457 C4	NK3 610/457 C4	E 610/457 C4	GEH 610/457 C4
762	457	762				NN 762/457 C4	NK3 762/457 C4	E 762/457 C4	GEH 762/457 C4
914	457	914				NN 914/457 C4	NK3 914/457 C4	E 914/457 C4	GEH 914/457 C4
1067	457	1067				NN 1067/457 C4	NK3 1067/457 C4	E 1067/457 C4	GEH 1067/457 C4
1219	457	1219				NN 1219/457 C4	NK3 1219/457 C4	E 1219/457 C4	GEH 1219/457 C4
1372	457	1372				NN 1372/457 C4	NK3 1372/457 C4	E 1372/457 C4	GEH 1372/457 C4
1524	457	1524				NN 1524/457 C4	NK3 1524/457 C4	E 1524/457 C4	GEH 1524/457 C4
1676	457	914	762			NN 1676/457 C4	NK3 1676/457 C4	E 1676/457 C4	GEH 1676/457 C4
1828	457	914	914			NN 1828/457 C4	NK3 1828/457 C4	E 1828/457 C4	GEH 1828/457 C4
1981	457	1067	914			NN 1981/457 C4	NK3 1981/457 C4	E 1981/457 C4	GEH 1981/457 C4
2134	457	1067	1067			NN 2134/457 C4	NK3 2134/457 C4	E 2134/457 C4	GEH 2134/457 C4
2286	457	1219	1067			NN 2286/457 C4	NK3 2286/457 C4	E 2286/457 C4	GEH 2286/457 C4
2438	457	1219	1219			NN 2438/457 C4	NK3 2438/457 C4	E 2438/457 C4	GEH 2438/457 C4
2591	457	1524	1067			NN 2591/457 C4	NK3 2591/457 C4	E 2591/457 C4	GEH 2591/457 C4
2743	457	1524	1219			NN 2743/457 C4	NK3 2743/457 C4	E 2743/457 C4	GEH 2743/457 C4
2896	457	1524	1372			NN 2896/457 C4	NK3 2896/457 C4	E 2896/457 C4	GEH 2896/457 C4
3048	457	1524	1524			NN 3048/457 C4	NK3 3048/457 C4	E 3048/457 C4	GEH 3048/457 C4
3201	457	1067	1067	1067		NN 3201/457 C4	NK3 3201/457 C4	E 3201/457 C4	GEH 3201/457 C4
3353	457	1219	1067	1067		NN 3353/457 C4	NK3 3353/457 C4	E 3353/457 C4	GEH 3353/457 C4
3505	457	1219	1219	1067		NN 3505/457 C4	NK3 3505/457 C4	E 3505/457 C4	GEH 3505/457 C4
3657	457	1219	1219	1219		NN 3657/457 C4	NK3 3657/457 C4	E 3657/457 C4	GEH 3657/457 C4
3810	457	1524	1219	1067		NN 3810/457 C4	NK3 3810/457 C4	E 3810/457 C4	GEH 3810/457 C4
3962	457	1524	1219	1219		NN 3962/457 C4	NK3 3962/457 C4	E 3962/457 C4	GEH 3962/457 C4
4115	457	1524	1524	1067		NN 4115/457 C4	NK3 4115/457 C4	E 4115/457 C4	GEH 4115/457 C4
4267	457	1524	1524	1219		NN 4267/457 C4	NK3 4267/457 C4	E 4267/457 C4	GEH 4267/457 C4
4420	457	1219	1067	1067	1067	NN 4420/457 C4	NK3 4420/457 C4	E 4420/457 C4	GEH 4420/457 C4
4572	457	1524	1524	1524		NN 4572/457 C4	NK3 4572/457 C4	E 4572/457 C4	GEH 4572/457 C4
4724	457	1219	1219	1219	1067	NN 4724/457 C4	NK3 4724/457 C4	E 4724/457 C4	GEH 4724/457 C4
4876	457	1219	1219	1219	1219	NN 4876/457 C4	NK3 4876/457 C4	E 4876/457 C4	GEH 4876/457 C4
5029	457	1524	1219	1219	1067	NN 5029/457 C4	NK3 5029/457 C4	E 5029/457 C4	GEH 5029/457 C4
5181	457	1524	1219	1219	1219	NN 5181/457 C4	NK3 5181/457 C4	E 5181/457 C4	GEH 5181/457 C4
5334	457	1524	1524	1219	1067	NN 5334/457 C4	NK3 5334/457 C4	E 5334/457 C4	GEH 5334/457 C4
5486	457	1524	1524	1219	1219	NN 5486/457 C4	NK3 5486/457 C4	E 5486/457 C4	GEH 5486/457 C4
5639	457	1524	1524	1524	1067	NN 5639/457 C4	NK3 5639/457 C4	E 5639/457 C4	GEH 5639/457 C4
5791	457	1524	1524	1524	1219	NN 5791/457 C4	NK3 5791/457 C4	E 5791/457 C4	GEH 5791/457 C4
6096	457	1524	1524	1524	1524	NN 6096/457 C4	NK3 6096/457 C4	E 6096/457 C4	GEH 6096/457 C4

Order references in the table relate to a shelf height of approx. 1900 mm with 4 shelves per unit.

! Available heights for all storage racks: 1400 mm, 1600 mm and 2200 mm. All systems are also available in the following depths: 356 mm, 533 mm and 610 mm. Storage racks can also be delivered with 5 or more shelves per unit.

SHELF CARTS SUPER NN AND SUPER SEAL



4512 FB4

The carrying capacity of the **shelves and sorting trolley** for the standard casters with a diameter of 150 mm is max. 300 kg per trolley.

// TECHNICAL DESCRIPTION

- + **Casters**
4 swivel casters, 2 with double brake, Ø 150 mm
- + **Tread**
Solid gray rubber profile
- + **Caster housing**
Zinc-chromated

MODEL	DEPTH mm	HEIGHT mm	NO. OF SHELVES	ORDER CODE WIDTH 610 mm	ORDER CODE WIDTH 914 mm	ORDER CODE WIDTH 1219 mm	ORDER CODE WIDTH 1524 mm	ORDER CODE WIDTH 1829 mm
SUPER NN SUPER SEAL	457	1565	4	NN 4561 FA4 NK3 4561 FA4	NN 4591 FA4 NK3 4591 FA4	NN 4512 FA4 NK3 4512 FA4	NN 4515 FA4 NK3 4515 FA4	NN 4518 FA4 NK3 4518 FA4
SUPER NN SUPER SEAL	533	1565	4	NN 5361 FA4 NK3 5361 FA4	NN 5391 FA4 NK3 5391 FA4	NN 5312 FA4 NK3 5312 FA4	NN 5315 FA4 NK3 5315 FA4	NN 5318 FA4 NK3 5318 FA4
SUPER NN SUPER SEAL	610	1565	4	NN 6161 FA4 NK3 6161 FA4	NN 6191 FA4 NK3 6191 FA4	NN 6112 FA4 NK3 6112 FA4	NN 6115 FA4 NK3 6115 FA4	NN 6118 FA4 NK3 6118 FA4

MODEL	DEPTH mm	HEIGHT mm	NO. OF SHELVES	ORDER CODE WIDTH 610 mm	ORDER CODE WIDTH 914 mm	ORDER CODE WIDTH 1219 mm	ORDER CODE WIDTH 1524 mm	ORDER CODE WIDTH 1829 mm
SUPER NN SUPER SEAL	457	1785	4	NN 4561 FB4 NK3 4561 FB4	NN 4591 FB4 NK3 4591 FB4	NN 4512 FB4 NK3 4512 FB4	NN 4515 FB4 NK3 4515 FB4	NN 4518 FB4 NK3 4518 FB4
SUPER NN SUPER SEAL	533	1785	4	NN 5361 FB4 NK3 5361 FB4	NN 5391 FB4 NK3 5391 FB4	NN 5312 FB4 NK3 5312 FB4	NN 5315 FB4 NK3 5315 FB4	NN 5318 FB4 NK3 5318 FB4
SUPER NN SUPER SEAL	610	1785	4	NN 6161 FB4 NK3 6161 FB4	NN 6191 FB4 NK3 6191 FB4	NN 6112 FB4 NK3 6112 FB4	NN 6115 FB4 NK3 6115 FB4	NN 6118 FB4 NK3 6118 FB4

PATIENT ITEM CARTS NK3 4512FB 5-16

The **sorting shelf trolley** design is especially suitable for laundry with residual moisture. With the epoxy coating there is an improved resistance to corrosion compared with our chromated steel trolleys. The tabs NK3 9084 Z on this type of trolley are of plastic. Rods are made of stainless steel.

// TECHNICAL DESCRIPTION

- + **Casters**
4 swivel casters, 2 with brake,
Ø 125 mm
- + **Tread**
Thermoplastic rubber tape



NK3 4512 FB5-16

WIRE UTILITY CARTS SUPER NN



5391 FE3 (3-shelf model)

Wire utility carts are available with 2 or 3 shelves and have a load rating of approx. 300 kg per cart. Height of cart handle: 1010 mm. Swiveling radius of the casters approx. 125 mm.

// TECHNICAL DESCRIPTION

- + **Casters** 4 swivel casters, 2 with double brake, Ø 125 mm
- + **Tread** Solid gray rubber profile
- + **Caster housing** Zinc-chromated

MODEL	WIDTH mm	DEPTH mm	HEIGHT mm	NO. OF SHELVES	ORDER CODE
SUPER NN	914	533	1010	2	NN 5391 FE2
SUPER NN	914	533	1010	3	NN 5391 FE3
SUPER NN	914	610	1010	2	NN 6191 FE2
SUPER NN	914	610	1010	3	NN 6191 FE3

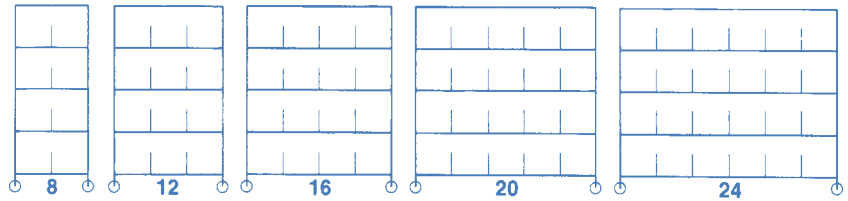
PATIENT ITEM CARTS SUPER NN AND SUPER SEAL



4561 FB 5-8
(8-bay cart)

// TECHNICAL DESCRIPTION

- + 5 wire shelves
- + End enclosures consisting of 3 rods per end, back enclosures consisting of 2 rods per compartment
- + Dividers for individual compartments
- + 1 label holder for each compartment
- + **Casters** 4 swivel casters, 2 with double brake, Ø 150 mm
- + **Tread** Solid gray rubber profile



MODEL	DEPTH mm	HEIGHT mm	ORDER CODE WIDTH 610 mm 8 BAYS	ORDER CODE WIDTH 914 mm 12 BAYS	ORDER CODE WIDTH 1219 mm 16 BAYS	ORDER CODE WIDTH 1524 mm 20 BAYS	ORDER CODE WIDTH 1829 mm 24 BAYS
SUPER NN	457	1785	NN 4561 FB 5-8	NN 4591 FB 5-12	NN 4512 FB 5-16	NN 4515 FB 5-20	NN 4518 FB 5-24
SUPER SEAL			NK3 4561 FB 5-8	NK3 4591 FB 5-12	NK3 4512 FB 5-16	NK3 4515 FB 5-20	NK3 4518 FB 5-24
SUPER NN	533	1785	NN 5361 FB 5-8	NN 5391 FB 5-12	NN 5312 FB 5-16	NN 5315 FB 5-20	NN 5318 FB 5-24
SUPER SEAL			NK3 5361 FB 5-8	NK3 5391 FB 5-12	NK3 5312 FB 5-16	NK3 5315 FB 5-20	NK3 5318 FB 5-24
SUPER NN	610	1785	NN 6161 FB 5-8	NN 6191 FB 5-12	NN 6112 FB 5-16	NN 6115 FB 5-20	NN 6118 FB 5-24
SUPER SEAL			NK3 6161 FB 5-8	NK3 6191 FB 5-12	NK3 6112 FB 5-16	NK3 6115 FB 5-20	NK3 6118 FB 5-24

Dimensions of bays approx. 290 x 340 mm (W x H), chromated

// INFORMATION

Eco Version for SUPER NN:

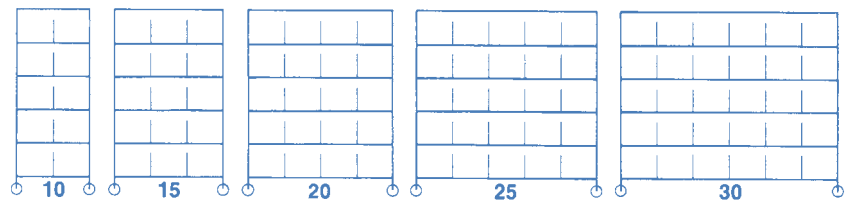
1 rod per compartment, 2 rods per face side. Add an „NN“ to the „NN“ model number (e.g., NN 4518 FB 6-30N)



4518 FB 6-30
(30-bay cart)

// TECHNICAL DESCRIPTION

- + 6 wire shelves
- + End enclosures consisting of 3 rods per end, back enclosures consisting of 2 rods per compartment
- + Dividers for individual compartments
- + 1 label holder for each compartment
- + **Casters** 4 swivel casters, 2 with double brake, Ø 150 mm
- + **Tread** Solid gray rubber profile



MODEL	DEPTH mm	HEIGHT mm	ORDER CODE WIDTH 610 mm 10 BAYS	ORDER CODE WIDTH 914 mm 15 BAYS	ORDER CODE WIDTH 1219 mm 20 BAYS	ORDER CODE WIDTH 1524 mm 25 BAYS	ORDER CODE WIDTH 1829 mm 30 BAYS
SUPER NN	457	1785	NN 4561 FB 6-10	NN 4591 FB 6-15	NN 4512 FB 6-20	NN 4515 FB 6-25	NN 4518 FB 6-30
SUPER SEAL			NK3 4561 FB 6-10	NK3 4591 FB 6-15	NK3 4512 FB 6-20	NK3 4515 FB 6-25	NK3 4518 FB 6-30
SUPER NN	533	1785	NN 5361 FB 6-10	NN 5391 FB 6-15	NN 5312 FB 6-20	NN 5315 FB 6-25	NN 5318 FB 6-30
SUPER SEAL			NK3 5361 FB 6-10	NK3 5391 FB 6-15	NK3 5312 FB 6-20	NK3 5315 FB 6-25	NK3 5318 FB 6-30
SUPER NN	610	1785	NN 6161 FB 6-10	NN 6191 FB 6-15	NN 6112 FB 6-20	NN 6115 FB 6-25	NN 6118 FB 6-30
SUPER SEAL			NK3 6161 FB 6-10	NK3 6191 FB 6-15	NK3 6112 FB 6-20	NK3 6115 FB 6-25	NK3 6118 FB 6-30

Dimensions of bays approx. 290 x 265 mm (W x H), chromated

ITEM CARTS SUPER NN AND SUPER SEAL



NN KS 1860-6

// TECHNICAL DESCRIPTION

- + 5/6 wire shelves
- + End enclosures consisting of 3 rods per end, back enclosures consisting of 2 rods per compartment
- + Dividers for individual compartments
- + 1 label holder for each compartment
- + Coat hanger tube is made of stainless steel, coat hangers not included
- + **Casters** 4 swivel casters, 2 with double brake, Ø 150 mm
- + **Tread** Solid gray rubber profile

■ Accessories for item carts see pages 173-175.

// INFORMATION

Eco Version for SUPER NN:
1 rod per compartment, 2 rods per face side. Add an „N“ to the „NN“ model number (e.g., NN KS 1848-5N)

MODEL	DEPTH mm	HEIGHT mm	NO. OF SHELVES CHROMATED	ORDER CODE WIDTH 1219 mm 8 BAYS	ORDER CODE WIDTH 1524 mm 12 BAYS	ORDER CODE WIDTH 1829 mm 16 BAYS
SUPER NN SUPER SEAL	457	1785	5	NN KS 1848-5 NK3 KS 1848-5	NN KS 1860-5 NK3 KS 1860-5	NN KS 1872-5 NK3 KS 1872-5
SUPER NN SUPER SEAL	533	1785	5	NN KS 2148-5 NK3 KS 2148-5	NN KS 2160-5 NK3 KS 2160-5	NN KS 2172-5 NK3 KS 2172-5
SUPER NN SUPER SEAL	610	1785	5	NN KS 2448-5 NK3 KS 2448-5	NN KS 2460-5 NK3 KS 2460-5	NN KS 2472-5 NK3 KS 2472-5

MODEL	DEPTH mm	HEIGHT mm	NO. OF SHELVES CHROMATED	ORDER CODE WIDTH 1219 mm 10 BAYS	ORDER CODE WIDTH 1524 mm 15 BAYS	ORDER CODE WIDTH 1829 mm 20 BAYS
SUPER NN SUPER SEAL	457	1785	6	NN KS 1848-6 NK3 KS 1848-6	NN KS 1860-6 NK3 KS 1860-6	NN KS 1872-6 NK3 KS 1872-6
SUPER NN SUPER SEAL	533	1785	6	NN KS 2148-6 NK3 KS 2148-6	NN KS 2160-6 NK3 KS 2160-6	NN KS 2172-6 NK3 KS 2172-6
SUPER NN SUPER SEAL	610	1785	6	NN KS 2448-6 NK3 KS 2448-6	NN KS 2460-6 NK3 KS 2460-6	NN KS 2472-6 NK3 KS 2472-6

GARMENT RACK



MK 2148

// TECHNICAL DESCRIPTION

- + Coat hanger tube and brackets are made of stainless steel
- + **Casters** 4 swivel casters, 2 with double brake, Ø 150 mm
- + **Tread** Solid gray rubber profile
- + **Caster housing** Zinc-chromated
- + Coat hangers not included

WIDTH mm	DEPTH mm	HEIGHT mm	MODEL SUPER NN	MODEL SUPER SEAL
610	533	1785	NN MK 2124	NK3 MK 2124
762	533	1785	NN MK 2130	NK3 MK 2130
914	533	1785	NN MK 2136	NK3 MK 2136
1067	533	1785	NN MK 2142	NK3 MK 2142
1219	533	1785	NN MK 2148	NK3 MK 2148
1524	533	1785	NN MK 2160	NK3 MK 2160
1829	533	1785	NN MK 2172	NK3 MK 2172

ACCESSORIES FOR SHELVING SYSTEM SUPER



NN 4518 FB 6-30, HB 4518 K

Cloth cart covers

These covers are available for shelf carts and patient item carts. Material: 100 % polyester, white, including zipper at both ends of the front side.

WIDTH mm	HEIGHT mm	ORDER CODE 457 mm	ORDER CODE 533 mm	ORDER CODE 610 mm
610	1590	HB 4561 K	HB 5361 K	HB 6161 K
762	1590	HB 4576 K	HB 5376 K	HB 6176 K
914	1590	HB 4591 K	HB 5391 K	HB 6191 K
1067	1590	HB 4510 K	HB 5310 K	HB 6110 K
1219	1590	HB 4512 K	HB 5312 K	HB 6112 K
1524	1590	HB 4515 K	HB 5315 K	HB 6115 K
1829	1590	HB 4518 K	HB 5318 K	HB 6118 K

Type B posts

When ordering other cart heights, please be sure to change the corresponding letter of the model. Type A posts, 457 X 610 mm shelves = HA 4561 K. Type B posts, 457 X 610 mm shelves = HB 4561 K. When ordering a custom height, please be sure to indicate the exact desired measurement.



Shelf dividers

Height 200 mm

LENGTH mm	ORDER CODE SUPER NN	ORDER CODE SUPER SEAL	ORDER CODE SUPER STAINLESS STEEL
356	NN 2035	DD14K3	E 2035 NS
457	NN 2045	DD18K3	
533	NN 2053	DD21K3	E 2053 NS
610	NN 2061	DD24K3	E 2061 NS



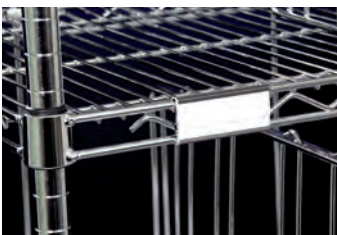
Wire baskets, chromated

These can be mounted on any wire shelf.

H 212 C

H 210 C

WIDTH mm	DEPTH mm	HEIGHT mm	ORDER CODE
343	127	178	H 209 C
440	190	130	H 210 C
440	190	255	H 212 C



Label holders

can be fastened anywhere on the shelf snake frame.

Labels
16 pieces per page

MODEL	ORDER CODE
Label holders	NN 9990 P2
Labels	EKP3



Pull out coat hanger tube
Can be mounted on shelf and item carts.
Extended length: approx. 300 mm
Material: stainless steel

MODEL	ORDER CODE
Coat hanger tube	MK 300



Heavy duty stainless steel carrier

with polymer bumper (PE).

MODEL	ORDER CODE
Stainless steel carrier	FGS + Shelf



3-sided frame

Stainless steel,
square tube 30 x 10 mm

MODEL	ORDER CODE
Frame	UR + Shelf + E

ACCESSORIES FOR SHELVING SYSTEM SUPER



Solid shelves
Solid shelves are available for any SUPER and SUPER NN unit. Suitable for all shelf sizes; thickness: 4 mm or 6 mm.



PE-protector frame
Mobile shelves can also be supplied with PE shock protection.



Shelf ledge
Height 25 mm



Shelf ledge
Height 100 mm

LENGTH mm	ORDER CODE SUPER NN CHROMATED	ORDER CODE SUPER STAINLESS STEEL
356	NN 2535	
457	NN 2545	E 2545 NS
533	NN 2553	E 2553 NS
610	NN 2561	E 2561 NS
762	NN 2576	
914	NN 2591	
1067	NN 2510	
1219	NN 2512	E 2512 NS
1372	-	E 2513 NS
1524	NN 2515	
1829	NN 2518	

LENGTH mm	ORDER CODE SUPER NN CHROMATED	ORDER CODE SUPER SEAL	ORDER CODE SUPER STAINLESS STEEL
356	NN 1035	L14N-4K3	E 1035 NS
457	NN 1045	L18N-4K3	E 1045 NS
533	NN 1053	L21N-4K3	
610	NN 1061	L24N-4K3	E 1061 NS
762	NN 1076	L30N-4K3	E 1076 NS
914	NN 1091	L36N-4K3	E 1091 NS
1067	NN 1010	L42N-4K3	
1219	NN 1012	L48N-4K3	
1372	-	L54N-4K3	E 1013 NS
1524	NN 1015	L60N-4K3	E 1015 NS
1829	NN 1018	L72N-4K3	



Tabs
for attaching the rods to the shelf.



Post clamps
Easy to install. Connects two posts for maximum strength.



Plastic split sleeve

MODEL	ORDER CODE
Tabs	9084 Z

MODEL	ORDER CODE
Post clamps	9994 Z

MODEL	ORDER CODE
Plastic split sleeve	9985



S-hooks
for attaching starter and add-on units.



Rods
chromated

MODEL	ORDER CODE
S-hooks	NN 9995 Z

LENGTH mm	ORDER CODE SUPER NN
1320	NN RA
1520	NN RB
1829	NN RC
2135	NN RD

ACCESSORIES FOR SHELVING SYSTEM SUPER



Swivel caster

DIAMETER mm	ORDER CODE
125	L 125GS 21
150	L 150GS 23



Swivel caster with double brake

DIAMETER mm	ORDER CODE
125	S 125GS 21
150	S 150GS 23



Donut bumper for posts of shelf carts SUPER.

MODEL	DIAMETER mm	ORDER CODE
Donut bumper	110	SPM



Swivel lock casters
These directional lock casters make it easy to manoeuvre the cart.

Recommended especially for carts longer than 1219 mm.



Specially designed expanding wedge mechanism

By Hammerlit and Tente specially designed expanding wedge mechanism made of forged steel with fiber-glass reinforced polymer, ensures maximum hold of the caster inside the post, for years of optimal performance.



Base plate for bolting shelving unit to the floor.

MODEL	ORDER CODE
Base plate	NN 9993 Z
Cap for adjustable feet	9991 P



Dunnage Rack "Bow Tie"

MODEL	WIDTH mm	DEPTH mm	HEIGHT mm	ORDER CODE
Dunnage Rack "Bow Tie"	760	550	305	HP2230PD
Dunnage Rack "Bow Tie"	910	550	305	HP2236PD
Dunnage Rack "Bow Tie"	1219	550	305	HP2248PD
Dunnage Rack "Bow Tie"	1525	550	305	HP2260PD

„The extensive range of accessories permits many different applications of this versatile shelving system!“

SHELVING SYSTEM CLASSIC, STAINLESS STEEL

The effective width of add-on units is 25 mm less compared to starter units. The effective width of add-on units positioned at 90 degrees to each other, the effective unit width is 18 mm less compared to starter units. We recommend to use wall fastening C6130E.



Starter unit



Classic side panels
Seamless welded



Starter unit with add-on unit

Classic solid shelves

- Of edged stainless steel sheet
- With load uniformly distributed, the capacity per shelf is 100 kg, total area load 600 kg.

WIDTH mm	ORDER CODE DEPTH* 400 mm	ORDER CODE DEPTH* 500 mm	ORDER CODE DEPTH* 600 mm	ORDER CODE X-BRACE
600	CG406	CG506	CG606	CX6
800	CG408	CG508	CG608	CX8
900	CG409	CG509	CG609	CX9
1000	CG410	CG510	CG610	CX10
1200	CG412	CG512	CG612	CX12
1400	CG414	CG514	CG614	CX14
1500	CG415	CG515	CG615	CX15

*Effective shelf depth is 60 mm less

- ! Shelves can be taken out singly and they are height adjustable in steps of 150 mm!

Classic side panels

- Stainless steel, 25 mm square tube construction, seamless welding
- With leveling bolts and polymer endcaps
- Shelf support every 150 mm
- Overall weight capacity of 600 kg

HEIGHT mm	ORDER CODE DEPTH 400 mm	ORDER CODE DEPTH 500 mm	ORDER CODE DEPTH 600 mm
1600	CS416	CS516	CS616
1800	CS418	CS518	CS618
2000	CS420	CS520	CS620



Corner connector
C9996X

Corner connector

With corner connectors, add-on units can also be positioned at 90 degrees. These connectors allow Classic Shelving Systems to be positioned at 90 degrees to each other. In this case only one side panel is needed to complete the shelving unit.

X-brace

In order to ensure maximum stability for inline shelving, all stand alone units and every third unit of an in line shelf configuration must have X-bracing.



SHELVING SYSTEM CLASSIC, STAINLESS STEEL, FOR STERILE UNITS STU AND ISO-MODULE



Sterile goods storage



Track shelving system



Telescopic pull out frame for STE baskets and containers CES60AZ2

CONNECTORS	SHELF HEIGHT mm	ORDER CODE STARTER UNIT	ORDER CODE ADD-ON UNITS	ORDER CODE X-BRACE	INCL. SIDE PANEL
for 40/60 trays, incl. liner MTRW6	2000	CLKA620	CLKI620	CXK	CSE620
for sterile containers on stainless steel slides CES60 , excl. slides	2000	CLEA620	CLEI620	CXE	CSE620
for 40/60 trays on stainless steel U-slides CESU60 , excl. U-slides	2000	CLUA620	CLUI620	CXU	CSE620
for 40/60 trays, incl. liner MTRW6	1800	CLKA618	CLKI618	CXK	CSE618
for sterile containers on stainless steel slides CES60 , excl. slides	1800	CLEA618	CLEI618	CXE	CSE618
for 40/60 trays on stainless steel U-slides CESU60 , excl. U-slides	1800	CLUA618	CLUI618	CXU	CSE618
for 40/60 trays, incl. liner MTRW6	1600	CLKA616	CLKI616	CXK	CSE616
for sterile containers on stainless steel slides CES60 , excl. slides	1600	CLEA616	CLEI616	CXE	CSE616
for 40/60 trays on stainless steel U-slides CESU60 , excl. U-slides	1600	CLUA616	CLUI616	CXU	CSE616

MODEL	ORDER CODE
Slide (pair), shelf width 60 mm, for shelf depth 600 mm	CES60
Slide U-profile (pair), shelf width 14 mm, for shelf depth 600 mm	CESU60
Pull out frame for STE baskets and containers (approx. 1/3)	CES60AZ2
Wire shelf 300 x 600 x 20 mm (W x D x H)	CES60DF
Wire shelf 400 x 600 x 20 mm (W x D x H)	CES60ISODF
Perforated metal shelves 300 x 600 mm (W x D)	CES60GF
Perforated metal shelves 400 x 600 mm (W x D)	CES60ISOGF

! X-braces see page 186!